

### ORDER INFORMATION

Series: 404, 26, S, 1, N, S, F, I, R

15, 26, 44, 62, 78

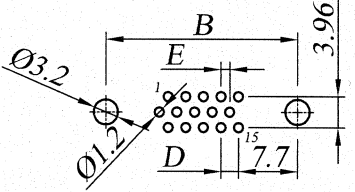
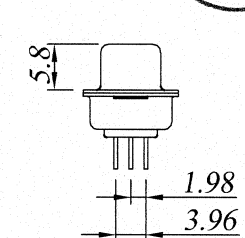
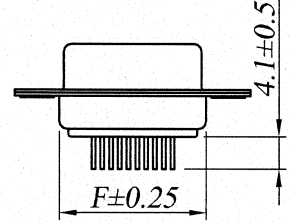
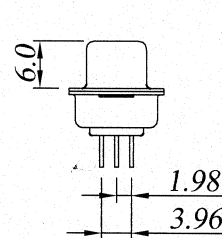
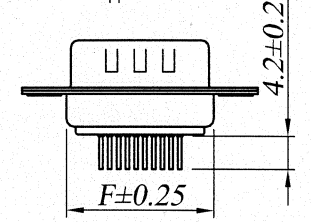
P: Plug  
S: Socket

COLOR  
1. Black  
2. White  
2. Blue

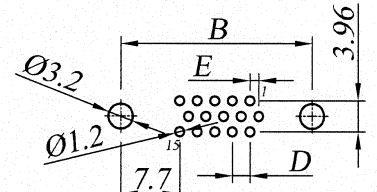
SHELL PLATED  
T: Tin  
N: Nickel  
K: Nickel plated on front shell  
Tin plated on rear shell

MOUNTING METHOD  
A: Through Hole  
B: Hex Screw+Hex Nut  
C: 3.8mm Open Hex Rivet  
D: 5.8mm Open Hex Rivet  
E: 5.8mm Close Round Rivet  
F: 5.8mm Close Hex Rivet  
G: 5.2mm Boardlock Rivet  
H: 10mm Boardlock Rivet  
I: 5.8mm Boardlock Rivet  
J: 8.0mm Boardlock Rivet  
K: 7.0mm Boardlock Rivet

ACCESSORIES  
N: None  
A: Front Rivet  
B: Front Rivet ADD Screw  
C: Front Rivet FIX Screw  
D: Rear Rivet  
E: Rear Rivet ADD Screw  
F: Rear Rivet FIX Screw



H/D 15pin(M)  
P.C.B LAYOUT  
TO SUGGEST

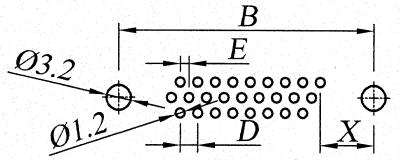


H/D 15pin(F)  
P.C.B LAYOUT  
TO SUGGEST

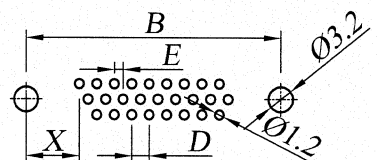
MATERIAL  
Insulator: PBT  
Contact: Copper Alloy  
Shell: Steel, Nickel or Tin or Zinc plated

SPECIFICATION  
Current rate: 1AMPS  
Insulator resistance: 1000MΩ MIN AT 500V DC  
Contact resistance: 30mΩ Max  
Dielectric strength: 500V(ac) for 1 minute  
Total mating force: 8.0 kgf max  
Total unmating force: 1.5 kgf min  
Operation temperature: -55°C TO +105°C

Contact Plated  
T: Tin  
S: Selective Gold  
S1: 5u" Selective Gold  
S2: 15u" Selective Gold  
S3: 30u" Selective Gold  
G: Gold  
G1: 5u" Gold Plated  
G2: 15u" Gold Plated  
G3: 30u" Gold Plated



MALE

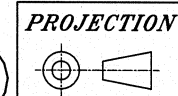
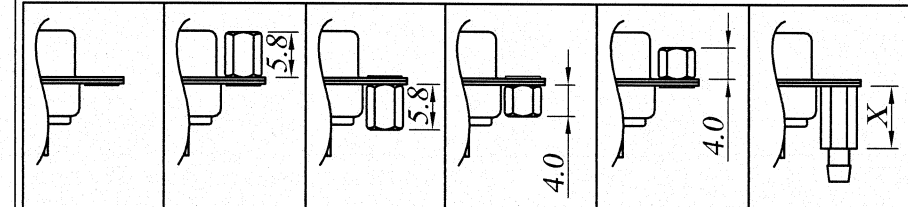


FEMALE

X	POSITION	X
6.99	26P/26S	6.99
6.99	44P/44S	6.99
7.07	62P/62S	7.07

26pin&44pin&62pin  
P.C.B LAYOUT  
TO SUGGEST

Mounting Style



TOLERANCE UNLESS OTHERWISE SPECIFIED

XX ±0.5  
.X ±0.25  
.XX ±0.10  
.XXX ±0.05

UNITS  
MM

核准者  
APPROVAL

審圖者  
CHECKED

繪圖者  
DRAWING

蘇純傑

SAM

Tino

**YIMTEK**  
ELECTRONIC CO., LTD.

DATE: 28/05/2009

REVISE: A/0

TITLE: D-SUB CONNECTOR STRAIGHT TYPE HIGH DENSITY

PART NO. 404-Series

DWG NO. YM-SRS-40400001