

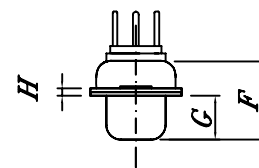
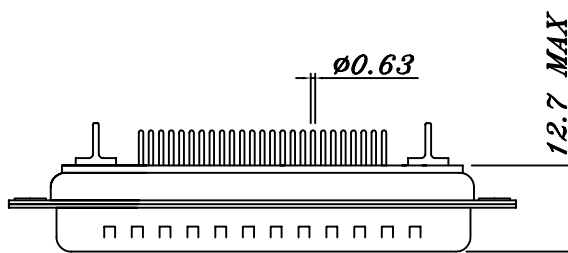
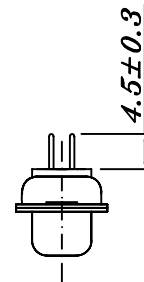
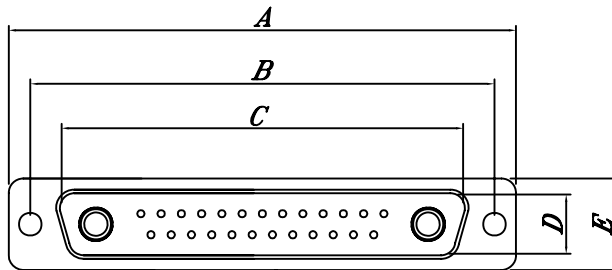
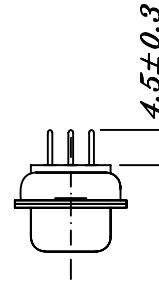
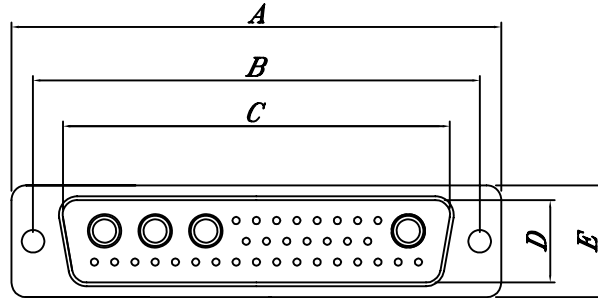
# Coaxial Contact With Straight Type PCB Termination Plug

## Material

- \* Contact: Copper alloy,  
Nickel-undercoated; gold plated
- \* Metal shell: Steel  
Nickel plated or yellow chromated
- \* Insulator: Thermoplastic black (UL94V-0)
- \* Coaxial center insulator: Teflon
- \* Metal bracket: Steel
- \* Boardlock/Screw: Brass

## Electric & Mechanical Data

- \* Operating temperature:  $-55^{\circ}\text{C} \sim 125^{\circ}\text{C}$
- \* Current rating: Signal contact 5A
- \* Test voltage: 1000 V
- \* Insulation resistance:  $\geq 5,000.0$
- \* Contact resistance: Initial / max. 10m $\Omega$
- \* Mating force: Signal contact  $\leq 2.3\text{n}(0.234\text{kg})$   
Coaxial contact  $\leq 7\text{N}(0.714\text{kg})$
- \* Unmating force: Signal contact  $\geq 0.6\text{n}(0.062\text{kg})$   
Coaxial contact  $\geq 7\text{N}(0.714\text{kg})$
- \* Mating cycle: 100 mating cycles



## Dimensions

Shell Type	A	B	C	D	E	F	G	H
	$\pm 0.38$	$\pm 0.13$	$\pm 0.13$	$\pm 0.13$	$\pm 0.13$	$\pm 0.25$	$\pm 0.4$	$\pm 0.2$
1	30.80	25.00	16.92	8.36	12.5	10.9	6.0	0.9
2	39.20	33.30	25.25	8.36	12.5	10.9	6.0	0.9
3	53.10	47.10	38.96	8.36	12.5	10.9	6.0	0.9
4	69.40	63.50	55.42	8.36	12.5	10.9	6.0	0.9
5	67.00	61.00	52.81	11.3	15.3	10.9	6.0	0.9